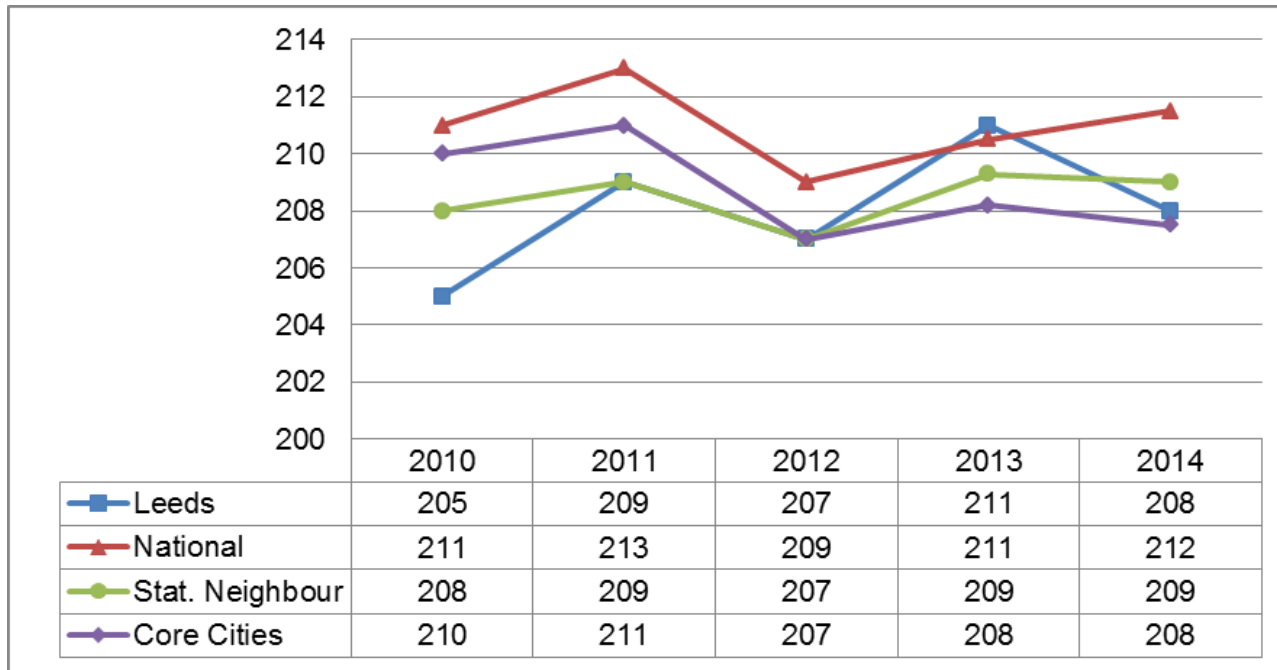


2013-14, Key Stage 5 - Learning Outcomes Dashboards

Data used is for GCE A level and Level 3 results of all state-funded students aged 16 to 19 Covers all state-funded mainstream schools, academies, free schools, maintained special schools and FE sector colleges.

Dashboards	Changes Since Previous Version
Average points per student at A level	New dashboard added
Average points per entry at A level	New dashboard added
Percentage achieving two or more passes at A Level	New dashboard added
Percentage achieving three or more A*-A passes at A Level	New dashboard added
Percentage of students achieving grades AAB or better at GCE A level in facilitating subjects	New dashboard added

2013-14, Key Stage 5 - Average points per entry at A level



England Rank	101/150
--------------	---------

National Quartile Position	Change from last year
3rd Quartile	3 pts

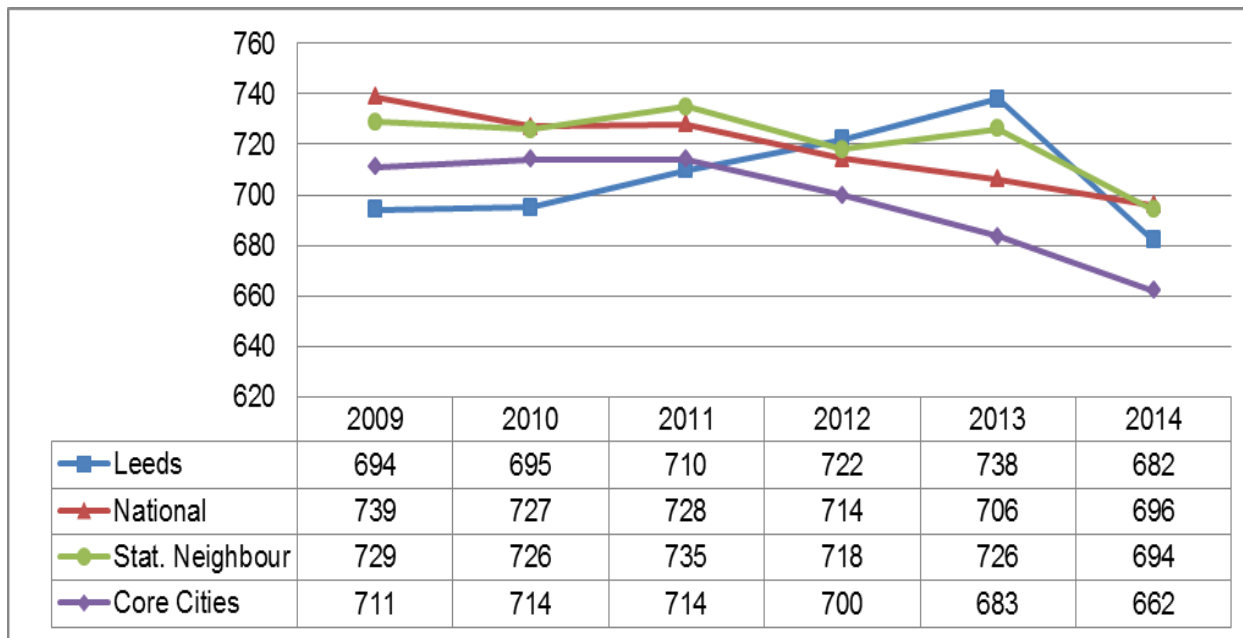
Key Issues: Performance in Leeds has fallen by three percentage points in 2014 and is inline with core cities but below the national average. Please note the statistical neighbour list for Leeds was revised in October 2014, therefore any comparisons should be made with caution.

Data Status: Final
Data Source: Statistical First Release: SFR 03/2015

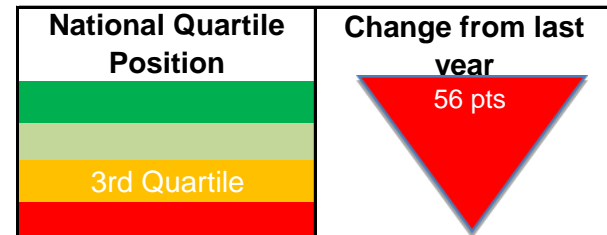
Data Notes: Data used is for GCE A level and Level 3 results of all state-funded students aged 16 to 19 Covers all state-funded mainstream schools, academies, free schools, maintained special schools and FE sector colleges.



2013-14, Key Stage 5 - Average points per student at A level



England Rank	79/150
--------------	--------



Key Issues: Performance in Leeds has fallen by 56 points in 2014 and is now below all comparators accept core cities. Please note the statistical neighbour list for Leeds was revised in October 2014, therefore any comparisons should be made with caution.

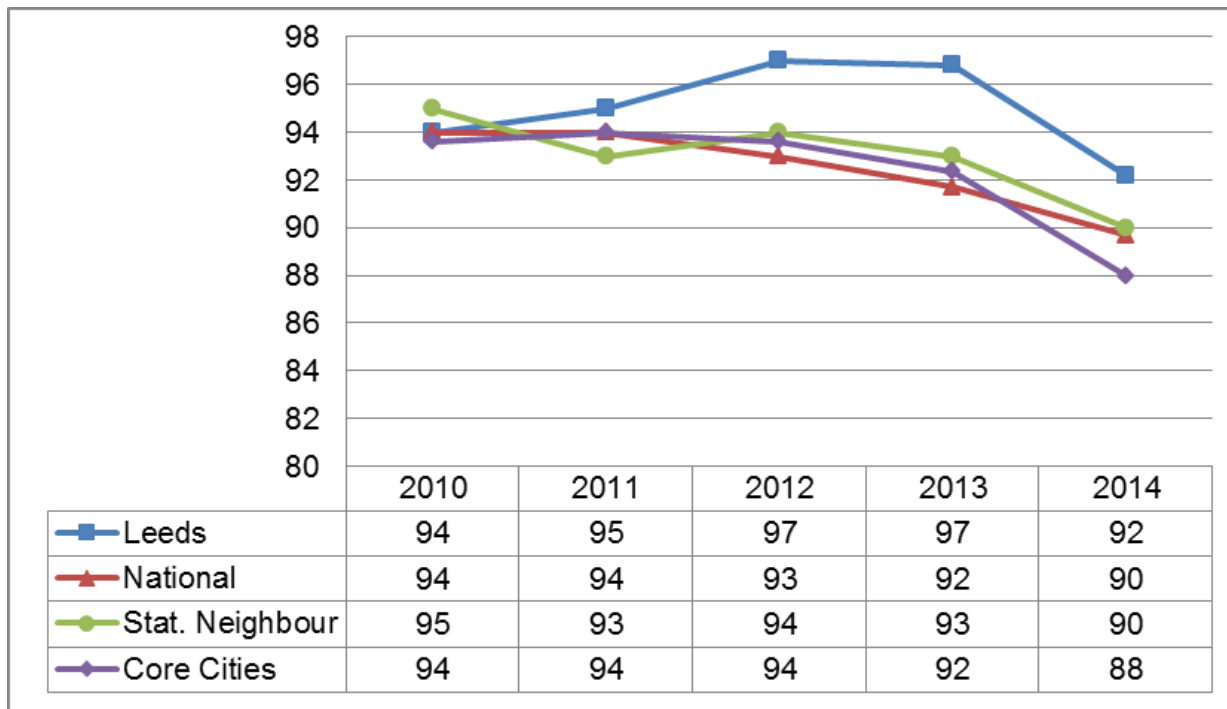
Data Status: Final

Data Source: Statistical First Release: SFR 03/2015

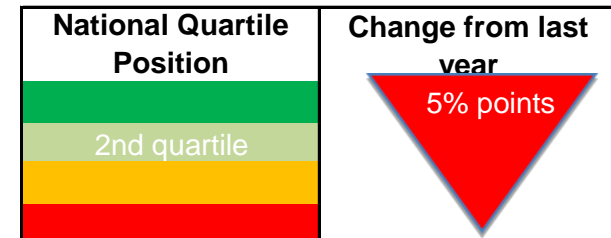
Data Notes: Data used is for GCE A level and Level 3 results of all state-funded students aged 16 to 19. Covers all state-funded mainstream schools, academies, free schools, maintained special schools and FE sector colleges.



2013-14, Key Stage 5 - Percentage achieving two or more passes at A Level



England Rank	equal 47/150
--------------	--------------



Key Issues: Performance in Leeds has fallen by five percentage points in 2014 and is now two percentage points above statistical neighbours and the national average. Please note the statistical neighbour list for Leeds was revised in October 2014, therefore any comparisons should be made with caution.

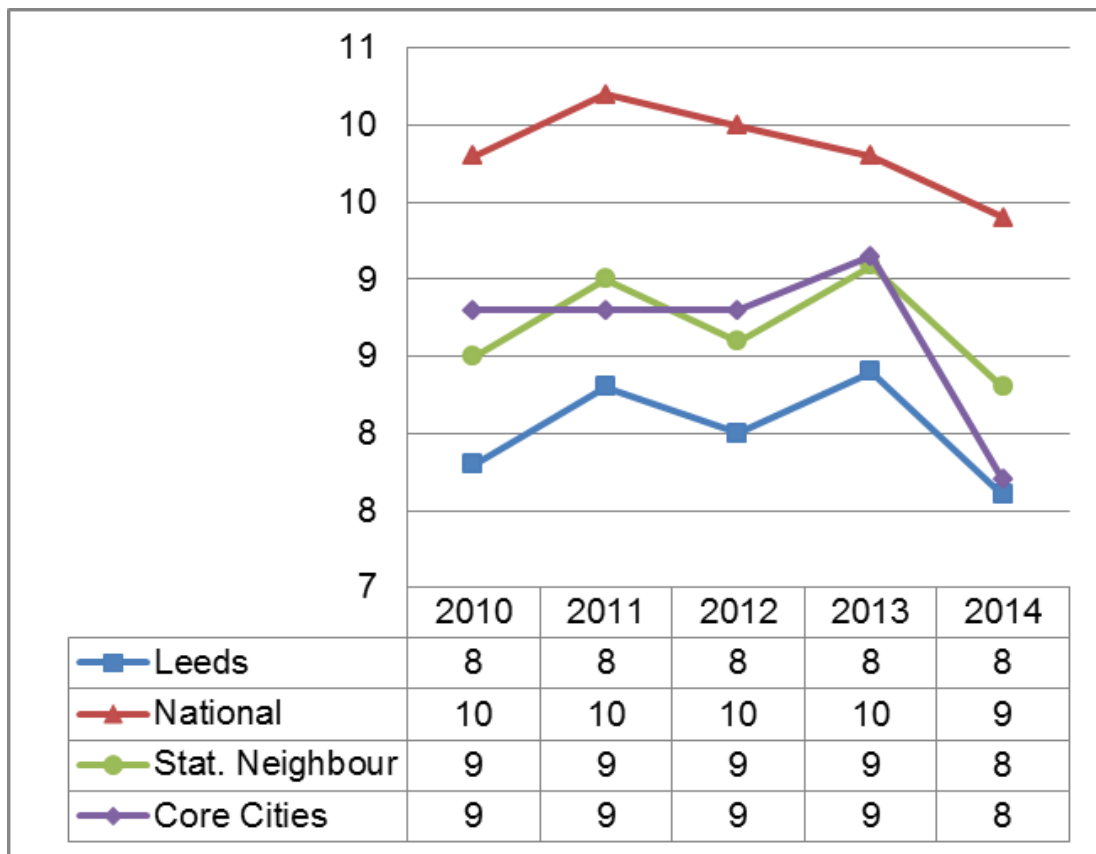
Data Status: Final

Data Source: Statistical First Release: SFR 03/2015

Data Notes: Data used is for GCE A level and Level 3 results of all state-funded students aged 16 to 19. Covers all state-funded mainstream schools, academies, free schools, maintained special schools and FE sector colleges.



2013-14, Key Stage 5 - Percentage achieving three or more A*-A passes at A Level



England Rank	79/149
--------------	--------

National Quartile Position	Change from last year
<div style="background-color: green; height: 15px; width: 100%;"></div> <div style="background-color: lightgreen; height: 15px; width: 100%;"></div> <div style="background-color: yellow; height: 15px; width: 100%; text-align: center;">3rd quartile</div> <div style="background-color: red; height: 15px; width: 100%;"></div>	Static

Key Issues: Performance in Leeds is consistent with 2013 and inline with statistical neighbours and core cities but is one percentage point below the national figure. Please note the statistical neighbour list for Leeds was revised in October 2014, therefore any comparisons should be made with caution.

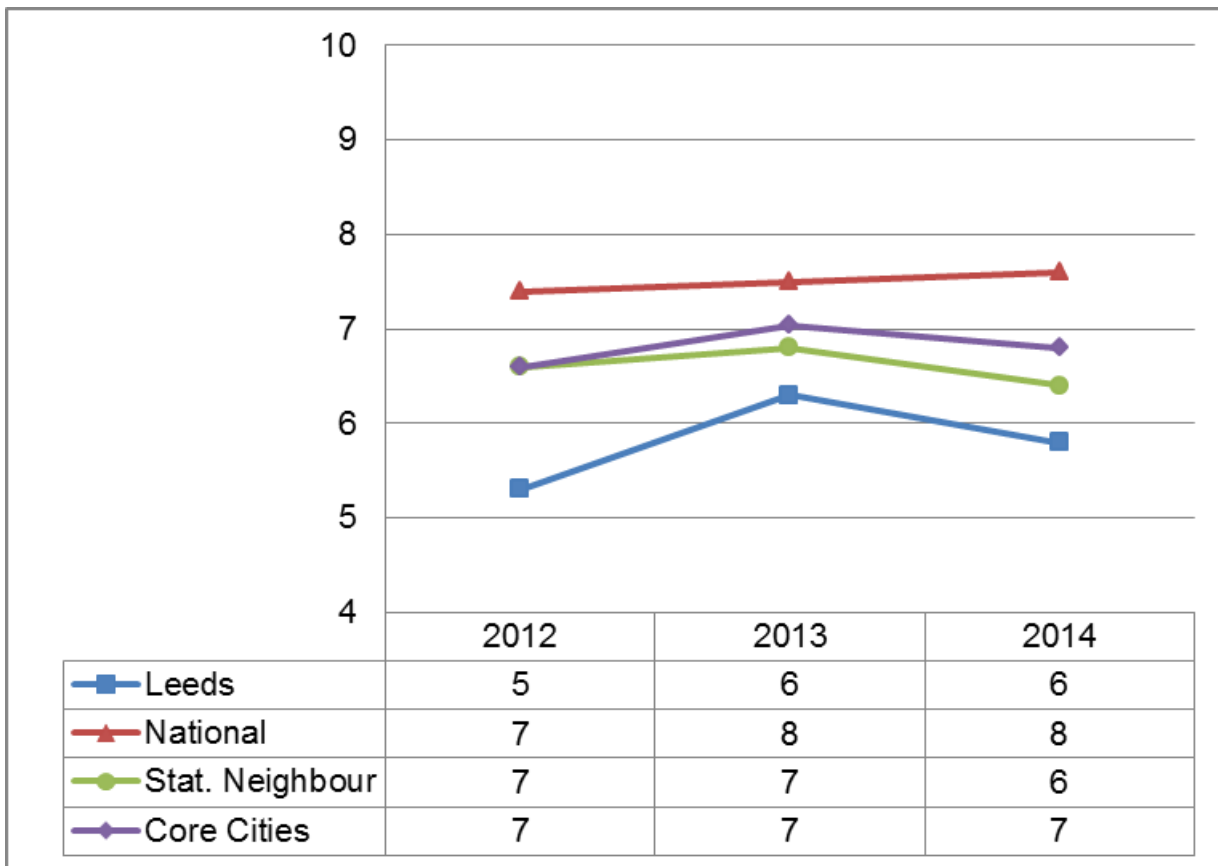
Data Status: Final

Data Source: Statistical First Release: SFR 03/2015

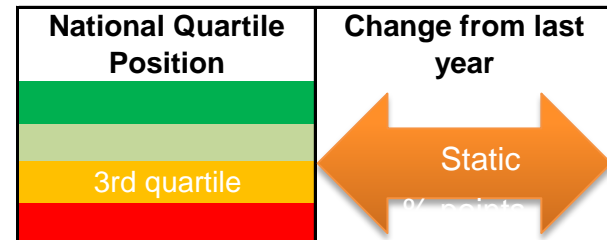
Data Notes: Data used is for GCE A level and Level 3 results of all state-funded students aged 16 to 19. Covers all state-funded mainstream schools, academies, free schools, maintained special schools and FE sector colleges.



2013-14, Percentage of students achieving grades AAB or better at GCE A level in facilitating subjects*



England Rank	equal 92/148
--------------	--------------



Key Issues: Performance in Leeds remains consistent with 2013 and is inline with statistical neighbours but below the national average by two percentage points. Please note the statistical neighbour list for Leeds was revised in October 2014, therefore any comparisons should be made with caution.

Data Status: Final

Data Source: Statistical First Release: SFR03/2015

Data Notes: * facilitating subjects -biology, chemistry, physics, mathematics, further mathematics, geography, history, English literature, modern and classical languages. Data used is for GCE A level and Level 3 results of all state-funded students aged 16 to 19. Covers all state-funded mainstream schools, academies, free schools, maintained special schools and FE sector colleges.

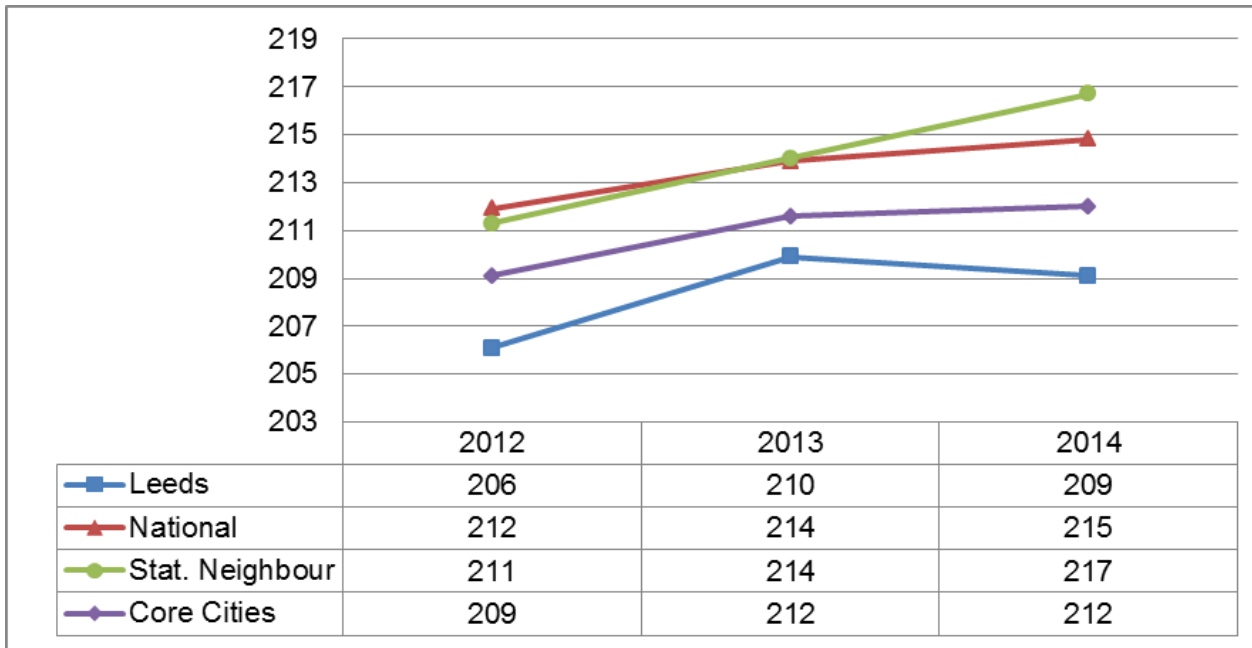


2013-14, Key Stage 5 - Learning Outcomes Dashboards

Please note these dashboards include data used is for GCE A level and Level 3 results of all state-funded students aged 16 to 19 covers all state-funded mainstream schools, academies, free schools and maintained special schools.

Dashboards	Changes Since Previous Version
Average points per student at A level	New dashboard added
Average points per entry at A level	New dashboard added
Percentage achieving two or more passes at A Level	New dashboard added
Percentage achieving three or more A*-A passes at A Level	New dashboard added
Percentage of students achieving grades AAB or better at GCE A level in facilitating subjects	New dashboard added

2013-14, Key Stage 5 - Average points per entry at A level



England Rank	Equal 94/149
--------------	--------------

National Quartile Position	Change from last year
 3rd Quartile	 1 pt.

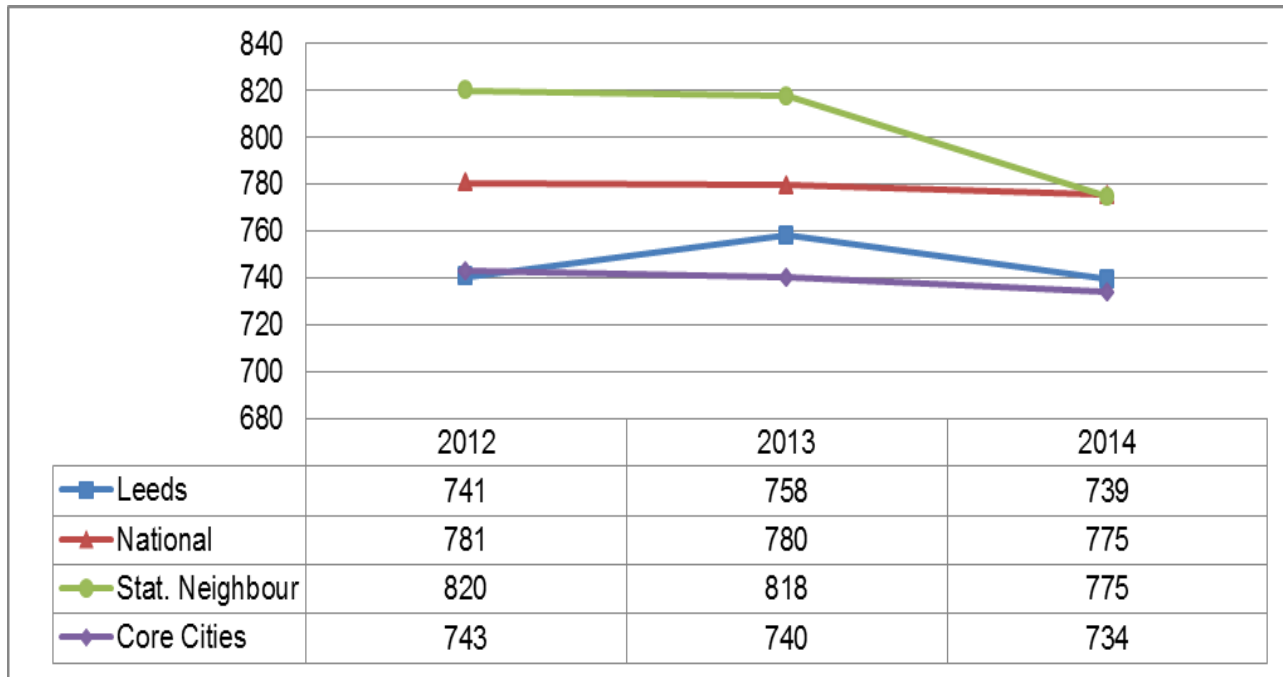
Key Issues: Performance in Leeds has fallen by one percentage points in 2014 and is now below all comparators. Please note the statistical neighbour list for Leeds was revised in October 2014, therefore any comparisons should be made with caution.

Data Status: Final
Data Source: Statistical First Release: SFR 03/2015

Data Notes: Data used is for GCE A level and Level 3 results of all state-funded students aged 16 to 19 Covers all state-funded mainstream schools, academies, free schools and maintained special schools.



2013-14, Key Stage 5 - Average points per student at A level



England Rank	Equal 94/149
--------------	--------------

National Quartile Position	Change from last year
<p>3rd Quartile</p>	<p>19 pts</p>

Key Issues: Performance in Leeds has fallen by 19 points in 2014 and is now below the national and statistical neighbour figures but is slightly above the core cities average. Please note the statistical neighbour list for Leeds was revised in October 2014, therefore any comparisons should be made with caution.

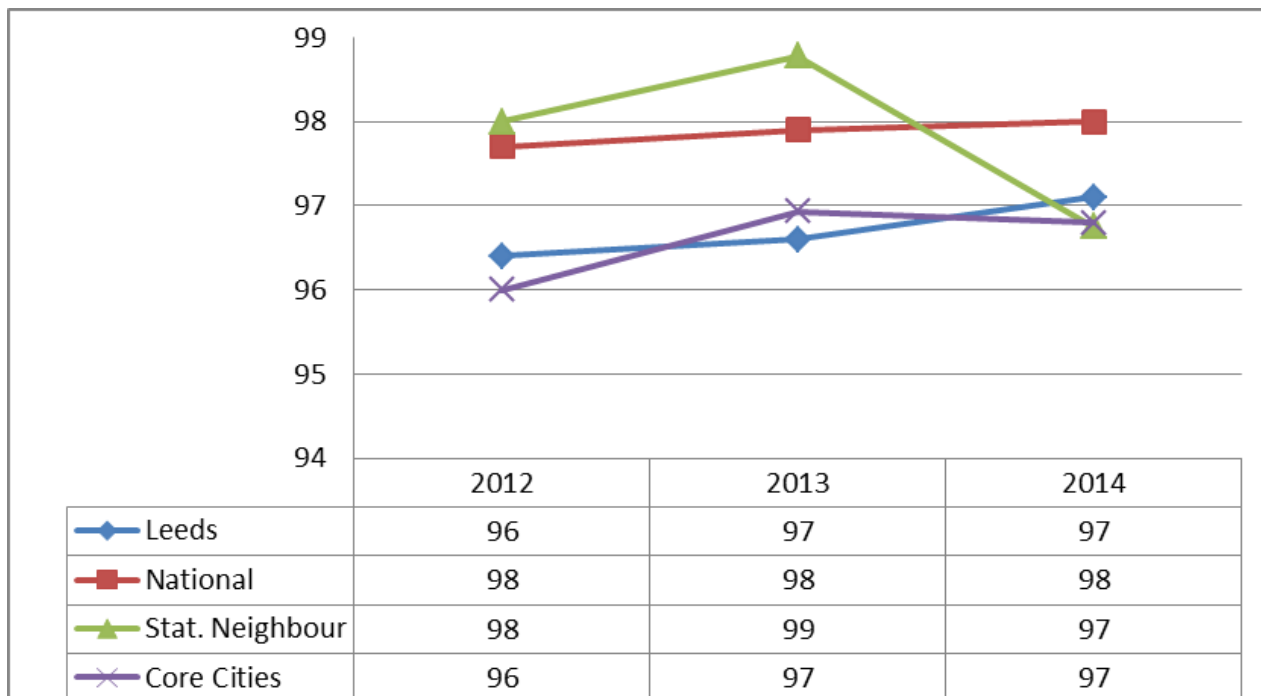
Data Status: Final

Data Source: Statistical First Release: SFR 03/2015

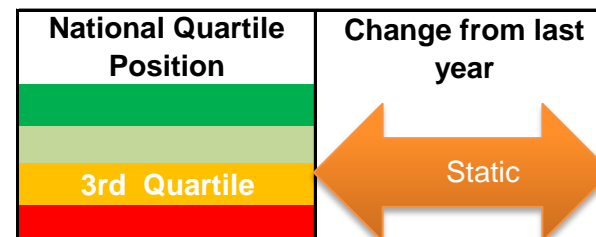
Data Notes: Data used is for GCE A level and Level 3 results of all state-funded students aged 16 to 19 Covers all state-funded mainstream schools, academies, free schools and maintained special schools.



2013-14, Key Stage 5 - Percentage achieving two or more passes at A Level



England Rank	equal 110/149
--------------	---------------



Key Issues: Performance in Leeds remains consistent with 2013 and is inline with statistical neighbours and core cities, but is slightly below the national average by one percentage point. Please note the statistical neighbour list for Leeds was revised in October 2014, therefore any comparisons should be made with caution.

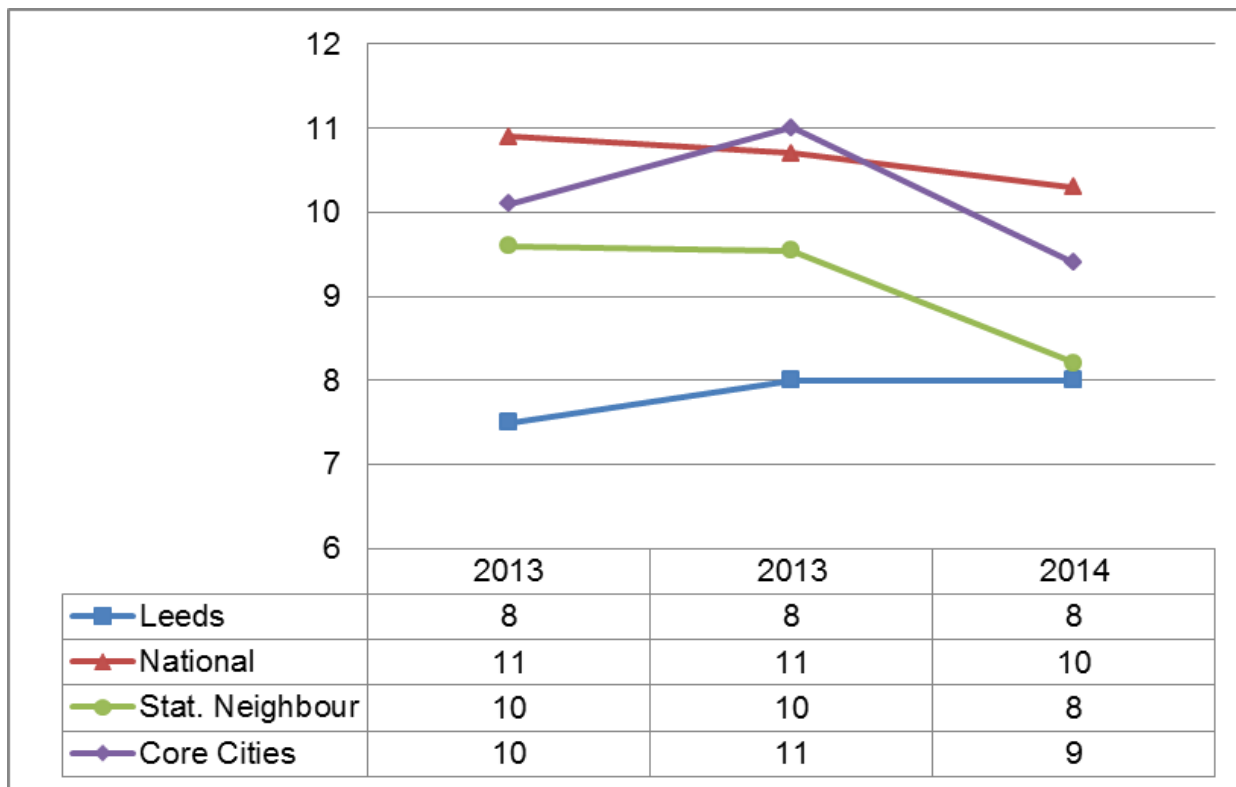
Data Status: Final

Data Source: Statistical First Release: SFR 03/2015

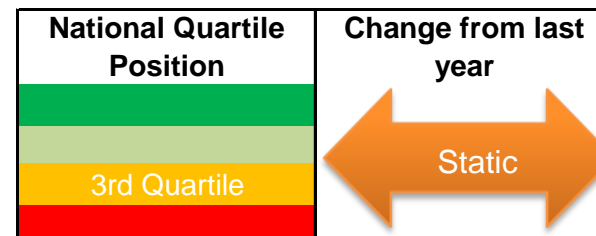
Data Notes: Data used is for GCE A level and Level 3 results of all state-funded students aged 16 to 19 Covers all state-funded mainstream schools, academies, free schools and maintained special schools.



2013-14, Key Stage 5 - Percentage achieving three or more A*-A passes at A Level



England Rank	equal 88/148
--------------	--------------



Key Issues: Performance in Leeds remains consistent with 2013 and is inline with statistical neighbours but is below the national average by two percentage points and one percent below core cities. Please note the statistical neighbour list for Leeds was revised in October 2014, therefore any comparisons should be made with caution.

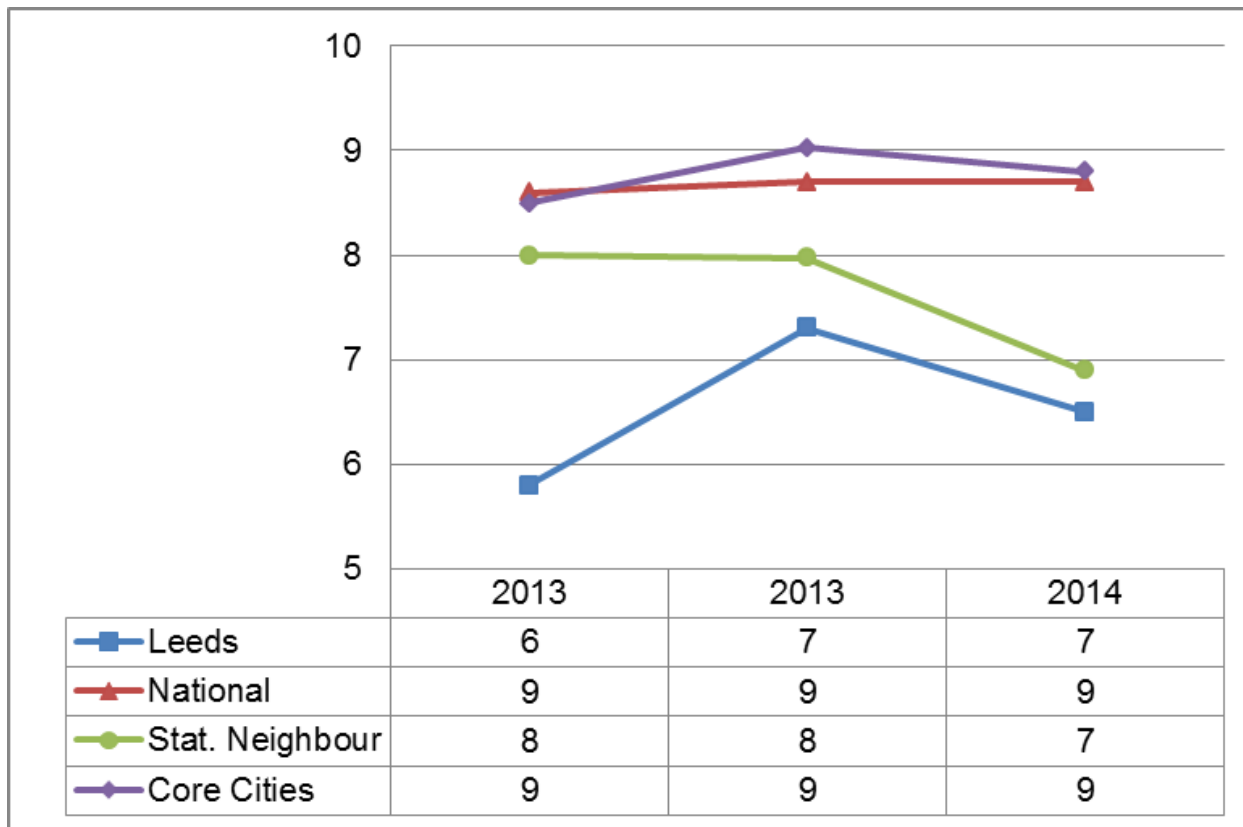
Data Status: Final

Data Source: Statistical First Release: SFR 03/2015

Data Notes: Data used is for GCE A level and Level 3 results of all state-funded students aged 16 to 19 Covers all state-funded mainstream schools, academies, free schools and maintained special schools.



2013-14, Percentage of students achieving grades AAB or better at GCE A level in facilitating subjects*



England Rank	equal 93/146
--------------	--------------

National Quartile Position	Change from last year
4th Quartile	
3rd Quartile	
2nd Quartile	
1st Quartile	

Key Issues: Performance in Leeds remains consistent with 2013 and is inline with statistical neighbours but is below the national average and core cities by one percentage point. Please note the statistical neighbour list for Leeds was revised in October 2014, therefore any comparisons should be made with caution.

Data Status: Final
Data Source: Statistical First Release:SFR 03/2015

Data Notes: * facilitating subjects -biology, chemistry, physics, mathematics, further mathematics, geography, history, English literature, modern and classical languages. Data used is for GCE A level and Level 3 results of all state-funded students aged 16 to 19. Data Notes: Data used is for GCE A level and Level 3 results of all state-funded students aged 16 to 19 Covers all state-funded mainstream schools, academies, free schools and maintained special schools.

